

GOVERNORS

Newsletter

Edition 2

Continuing to help raise educational standards in school.
We are a "critical friend", supporting the school to be
"...the best that they can be".

WHAT IS THE ROLE OF A GOVERNING BODY?

The governing body exists to provide strong strategic leadership to a school, ensuring accountability for its educational and financial performance. The Governors are often referred to as a "Critical Friend".

The Governance Handbook assigns 3 core functions to the board:

- Ensuring clarity of vision, ethos and strategic direction
- Holding executive leaders to account for the educational performance of the organisation and its pupils, and the performance management of staff
- Overseeing the financial performance of the organisation and making sure its money is well spent

We are there to support the work of the head teacher, senior leadership team and all staff. The full governing body meets at least once every half term, and delegates some of its work to committees.

Governors are all volunteers and at GPS in order to be an effective team we have delegated certain areas to each governor.

Name	Type of Governor	Special responsibilities
Lucy	Chair	Safeguarding
Tessa	Vice Chair	Finance & SEN
Matt	Parent	Health and Safety
Emilie	Community	Pupil Premium
Tom	Parent	Sports Premium
Sophie	Parent	Curriculum
Richard	Parent	Link

DID YOU KNOW THERE IS A SPORTS PREMIUM FUND?

What is the premium and how does it help?

The Primary PE and Sport Premium is a government-backed funding initiative aimed at helping primary schools across England improve their physical education and sport provisions.

The premium is designed to help children get an active start in life, supporting primary schools to improve the quality of their PE, physical activity/literacy, and sport provision so that pupils experience the benefits of regular exercise. This results in pupils becoming healthier both mentally and physically, to improve behaviour and academic achievement.

What are the objectives of the premium?

The Primary PE and Sport Premium is ring-fenced and must only be spent on physical education and sport provision in schools.

The funding aims to achieve improvement in all areas of PE, from the standard of physical education to introducing health focused physical activities and after school sports.

The key objectives of the premium are:

- Engage pupils in regular physical and healthy activity
- Raise the profile of PE and sport across the school as a tool for whole-school improvement
- Increase confidence, knowledge, and skills of all staff in teaching PE and sport
- Create a broader experience of a range of sports and activities offered to pupils
- Increase participation in competitive sports



From this funding GPS have been able to pay for a LCFC Community Trust Officer (aka Primary Stars) to come into our school and work with pupils and teachers to provide lunchtime coaching, professional development for our staff and to help children to participate in special events and competitions with other schools. Primary stars have also provided some of our after school provisions for this year. Here are some comments from our fabulous children...

Refreshed and calm,
ready to learn

Helps our brains
get stronger

Good for our body.
Helps us wake up

Puts a smile on
my face

My worries have
disappeared

A Governors report from our Vice Chair

This half term, I have had the opportunity to visit the school and meet with the School Council (socially distanced meeting). I went in to talk to them about the work they have been doing towards the school achieving the silver 'Beyond Bullying award'. The school had already achieved a bronze award 3 years ago and as it was time to renew the award, they decided to go for the next step up.

The School Council have played an important part in developing, writing and producing a child-friendly policy which will soon be shared with all the children and the rest of the school. They also had the opportunity to make their own questionnaire to learn about the wellbeing of children and behaviour in the school, which all the pupils completed. The policy looks brilliant so well done to all the children in the School Council! I think this will make a difference to children's understanding of bullying.

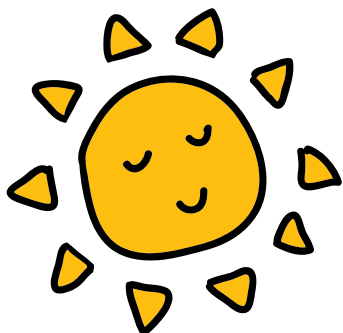
The Beyond Bullying Award is an important way for a school to gain accreditation and recognition for its achievements in developing an effective whole-school approach to anti-bullying and embedding good practice. To achieve the award, all members of the school community need to work together to send a clear message about bullying. In school, this is taught through PSHE (Personal, Social, and Health Education) lessons, assemblies, and is also threaded into the curriculum through the types of texts the children encounter.

This has been a whole-school approach and the roles of some members of staff have been particularly important in achieving this award including the behavior mentor, the parent officer, the ELSA (emotional literacy support assistant) and the Senior Leadership Team.

Although the school acknowledges that bullying can happen, incidents are rare. Children are able to talk about relationships more and can understand positive and negative behaviours. This has all worked towards building and celebrating an environment where all members of the school community feel welcome, valued and safe.

Another fantastic achievement for Glenfield Primary.... Keep your eye out for the child-friendly policy!

Tessa Wildgoose



We would like to take this opportunity to say another big **thank you** to all the staff at GPS, pupils and parents for coping brilliantly with another disruptive year. We hope that this summer holiday will bring you all some much needed time to recharge your batteries.

We know our staff and pupils are so strong and resilient that whatever next academic year throws at us, we will all continue to "be the best that we can be".

We wish you a very happy holiday.