

# WELCOME TO GLENFIELD



## SPEECH AND LANGUAGE PROVISION

Learn together, achieve together, be the best that we can be.



# ABOUT US



**Mrs. Tibbles**  
**Acting Headteacher**



At Glenfield Primary School we are proud to be a caring school where the well-being and development of every individual is of paramount importance. We have a friendly school, where children feel valued and secure and expectations are high. The school has a specialised provision for Speech and Language needs.

**Mr. Nathan Squires**  
**Head of Speech & Language Provision**



My name is Nathan Squires and I am the Head of the Speech and Language Provision. We are delighted that you are joining our little family here at Glenfield Primary School.

I have been teaching for a decade, specifically supporting children with EHCPs for three years but have experience in working with Early Years and SEND children for all my time teaching.

We are incredibly proud of the work that we do in the Provision. Our defining feature is our ability to improve the speech of our pupils and I know that you will see a remarkable improvement in a very short space of time. Our fantastic NHS therapists provide weekly support, followed up by our expert teaching assistants to tailor a specific programme designed to your individual child's needs. We can't wait to see them flourish and grow.

Your child will grow academically and socially, making new friends and building their confidence rapidly.

Enjoy the journey.





# CURRICULUM

We modify the National Curriculum and Primary Strategy to take account of your child's specific strengths and needs. All children are involved in English and Maths activities on a daily basis, with a heavier emphasis on the language content of the subject.

These subjects are taught in mixed groups focusing on the child's strengths and areas of weakness, for example we have a English group of children whose strengths are giving ideas verbally but who need additional support in recording those ideas.

We teach Science and the foundation subjects of History, Geography, Design and Technology and Art, through the "connected curriculum". This is taught through a topic based approach with lots of repetition and practical activities to make it meaningful for your child.

We also cook regularly, giving the children the opportunity to develop language and self-help skills. We try to link it to the connected curriculum topic or a set theme e.g. healthy eating or around the world. We also encourage the children to try the food broadening their experiences.





# HOW WE TEACH

We use lots of different strategies to help assistance the children. This is a quick snapshot of some of them.

Colourful Semantics is a scheme that gives the key words a colour, helping children to structure both their written and verbal sentences.

The **boy** **is eating** an **ice cream** in the **park**.



Who = **orange**

Doing = **yellow**

What = **green**

Where = **red**

Cued Articulation is a system of finger movements done near the mouth to help support the children with their articulation.

Makaton sign language helps the children focus and understand the key words of the language being used.

Sym writer is a computer programme that puts a symbol picture above a typed word. It gives the children who find reading tricky another framework of support

Visual timetables to help the children understand what is happening in the day.

We have lots of other small groups working on more targeted work for specific children including physiotherapy needs.

## All part of the same school

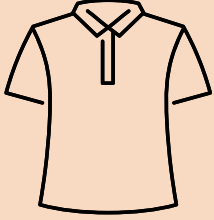
The Speech and language provision is part of the whole school and the children are included in school life activities, including lunchtimes, playtimes and assemblies, School Council, swimming lessons, residentials, performances and parties.

# WHAT YOUR CHILD WILL NEED

Name

PLEASE LABEL  
EVERYTHING

## School 'Kit List'



### Uniform

Royal blue jumper or cardigan

Grey trousers, skirt or dress

White or pale blue polo shirt, collared shirt or blouse

Black trainers

### PE Kit

Drawstring bag

Navy blue or black shorts

White or pale blue t-shirt

(NB. children will not need outdoor PE kit initially, we will let you know when they need this in school).



School uniform is available from:

**School uniform website**

[www.schooltrends.co.uk](http://www.schooltrends.co.uk)



### Other essentials

Water bottle (no juice or fizzy drinks please)

Pair of wellies

Waterproof coat

Lunchbox (if not taking the hot meal option).

The children will be provided with a daily fruit snack, so please do not send snacks to school.

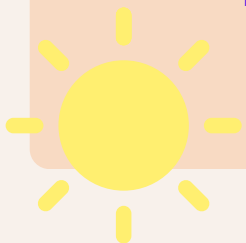
Once the children begin taking reading books home we will provide them a book bag. You do not need to buy one for your child.

No jewellery to be worn in school. Earrings will need to be removed on PE days.



## TIPS TO HELP YOUR CHILD

- Talk to your child about their new school, it will be an exciting new adventure but it's okay to feel a bit nervous too.
- Look at the pictures of the school and the staff that they will be working with (to follow in June). Show them where they can hang their coat, where they can go to the toilet and where they will be able to learn.
- Buy a water bottle that your child can open by themselves.
- If you are choosing packed lunches, make sure your child can open their lunchbox by themselves.
- Label everything with sew in or iron in labels, or using a 'wash proof' pen. The children get very upset if they lose an item of clothing!
- Share stories and ask your child about the things you have read together.
- Talk about things you see when you are out and about.
- Play games together that encourage your child to take turns and cooperate with other children.



# SCHOOL GATEWAY



We are a cash free school and run an online payment system. You will be able to make online payments to school via instant bank transfer, credit or debit card with immediate effect. You will be able to pay for dinner money, trips etc although we will only be able to accept payments for £5:00 and over. You will also be able to give online consent, where required, for your child to take part in activities.

Aside from saving the school time and money on administration, School Gateway will also make it easier for parent/carers to pay any time 24-7 and reduce the amount of cash being carried by children on premises.

What you need to do now

Activate your School Gateway account. It's quick and easy to do. All you need are your email address and mobile number that the school holds on record for you.

- Download the app: if you have a smartphone, please download School Gateway from your app store (Android and iPhone). The app shows the same information as the website PLUS it saves the school money when we send you a text message.

Or

- Visit the website: [www.schoolgateway.com](http://www.schoolgateway.com) and click on 'New User'. You'll receive a text message with a Pin number. Use this Pin to log into School Gateway.

If you're having trouble logging in, it may be that the school doesn't have your current email and mobile phone number on record. Please call the school and we'll update the details on our system.

**Please note: The Gateway system will not allow you to log in until your child has enrolled with us in September.**

# USEFUL INFORMATION



School gate opens at 8.30 and close at 8.42. Registration is 8.45.

## School phone number-

0116 2872188

Please use this number to report if your child is absent.

## School Website

[www.glenfield.leics.sch.uk](http://www.glenfield.leics.sch.uk)

## School uniform website

[www.schooltrends.co.uk](http://www.schooltrends.co.uk)

## Breakfast Club



We are pleased to offer a breakfast club facility here at Glenfield Primary School. We are able to provide 30 places supervised by 4 members of staff.

### General information:

- Breakfast club runs from 7.40-8.40, Monday-Friday.
- Children have the choice of at least 4 cereals plus a drink of milk, blackcurrant, orange, milk or water.
- After breakfast, the children take part in various activities or they may choose to sit and read.
- The cost per day is £3.25 and must be paid on the school gateway. Please note, all pre- booked places must be paid for regardless of attendance.

## After school Clubs

We do not run a permanent after school club facility. However we do offer a variety of clubs on a term by term basis. These are on a first come, first serve basis.



# Getting to know us

## Getting to know us

Miss. J Lyons – Thinkers Teacher  
Mr. N. Squires– Solvers Teacher

## Support Staff

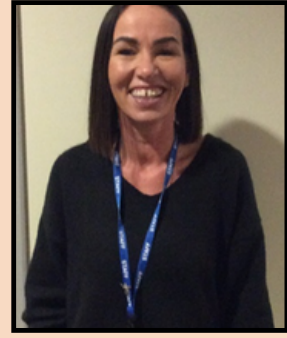
Mrs S Chalmers  
Mrs P Doshi  
Miss L Evans  
Mrs J Loach  
Mrs L Meadows  
Mrs J Higginson  
Miss. R. Bradford

## Speech and Language Therapists

Robyn Manchester  
Zoe Corden

We hope this gives you an insight into how our provision works. If you have any more questions or concerns please feel free to contact us on 0116 2872188

# PARENT OFFICER



The role of a parent officer is to make effective links between the school and home and to develop a strong link with parents /carers to increase children's learning and thereby raise attainment. My goal is to help pupils and families understand the learning process and the curriculum requirements, and at the same time assist with any issues, or concerns you may have.

I will be on hand and available during parents evenings and other school events to support if necessary. Home visits can also be arranged, as we understand it is not always possible to attend and this will help to build vital links between school and home. My role also includes pastoral care within the school and promoting resilience and mindfulness in everyday life. The strategies I use can be discussed at any time.

Please do not hesitate to contact/talk to me at these times or via the school on 01162872188 to arrange an appointment.



# CONTACTS

## Chemists:

Morningside, 64 Station Rd, Glenfield LE3 8BQ Tel: 0116 233 2713  
Parkem Chemist, 102 Dominion Rd, Glenfield Tel: 0116 287 2832

## Doctors:

Glenfield Surgery, 111 Station Road, Glenfield Tel: 0116 233 3600  
Oakmeadow Surgery, Tatlow Rd, Leicester Tel: 0116 232 0088

## Hospitals:

Glenfield Hospital, Groby Rd Tel: 0116 287 1471  
Leicester General Hospital, Gwendolen Road, Leicester Tel: 0116 249 0490  
Leicester Royal Infirmary, A&E Department Tel: 0116 254 1414  
Leicester Royal Infirmary, Maternity Hospital Tel: 0116 258 5111

NHS Direct: Tel: 111 or Website: 111nhs.uk  
Covid-19 NHS Emergency Helpline Line: Tel: 119

## Dentists:

Glenfield Dental Practice, 64 Station Road, Glenfield Tel: 0116 287 9608  
Liberty Road Dental Practice, 20 Liberty Road, Glenfield Tel: 0116 231 2929

## Opticians:

Edmonds & Slater, 3 Stamford Street, Glenfield Tel: 0116 287 1025  
Glenfield Opticians, 93 Dominion Rd, Glenfield Tel: 0116 287 4357

## Police:

For non-emergency calls, help or information Tel 0116 222 22222  
Crimestoppers: Tel: 0800 555 111  
Voice Message Service: (For direct contact with your Glenfield Village Policeman) 0116 248 5675

## Local Government:

Planning and Public Health: Blaby District County Council Offices, Narborough Tel: 0116 275 0555

## Council Housing:

Dangerous Buildings/Trees:

## Secondary Schools:

Martin High School, Link Rd, Anstey Tel: 0116 236 3291  
Brookvale High School, Ratby Rd, Groby Tel: 0116 287 7551  
New College Leicester, Glenfield Rd, Leicester Tel: 0116 231 8500

## Local Buses:

First Leicester 13 to City Centre  
First Group 14 and 14a to City Centre  
Centrebus 40 to Beaumont Leys and Fosse Park

## Taxis:

ADT Taxis Tel: 0116 233 1331 or 0116 233 3131  
Kirby taxi's Tel: 0116 2393939 Mobiles: 0773 957 3375 or 0774 072 5588  
Fosse Taxi Tel: 0116 232 2222

## Wrap around care:

Mindful Me Nursery Tel: 0116 4362542  
Glenfield Kids club Tel: 07938233859

Local Childminders  
WWW.childcare.co.uk

